

# Galileo

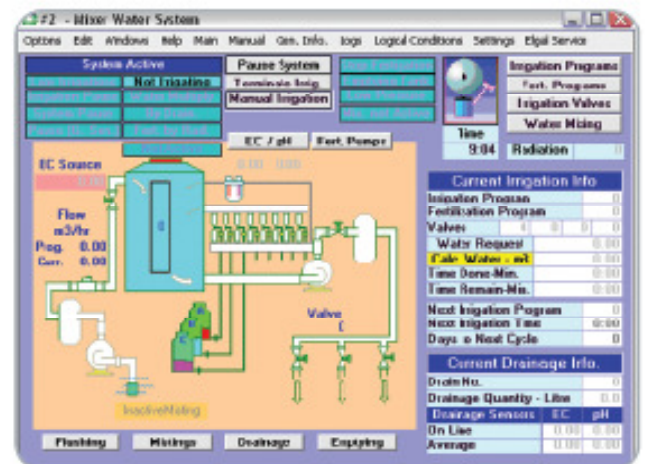


**Galileo** is a computerized agricultural control system, among the most advanced in its field, for climate control and irrigation in green houses and irrigation control of large open fields, farms, orchards, turf, public gardens and more.

## Green House Irrigation System

The system is composed of one irrigation head in which a fertilizer center performs sophisticated fertilizer injection of up to 8 different fertilizers whilst carrying out the essential control of conductivity and acidity of the irrigation water.

Galcon produces three type of machines suited to this application:



**Ferigal**

An inline fertilizer injection machine (without a mixing tank).



**Fertimix**

A fertilizer injection machine including a mixing tank



**Fertijet**

A by-pass fertilizer injection machine (without a mixing tank)

## Green House Irrigation Capabilities

The following elements can be operated by the irrigation system:

- One irrigation head including: main valve, water pump, main fert, etc.
- Up to 100 valves
- Up to 8 fertilizer pumps
- Up to 5 fert. selectors
- Up to 10 filters
- Up to 20 drainage sampling outputs
- Up to 40 misting valves
- Additional elements

The following elements can be read by the irrigation system

- One water meter
- 8 fertilizer meters
- Up to 100 sensors
- Special mixer Inputs
- Special mixing and recycling inputs.

Programming Features:

- Up to 100 irrigation program can be set, each containing:
  - Up to 4 valves directly and 16 valves, indirectly worked by a single program.
  - Preset fertilizer programs: Up to 50 different fertilizer programs in which the proportion of fertilizer/water for each fertilizer pump is set along with the EC/pH requirement.
  - The time range for operation.
  - Up to 5 hourly start times per day.
  - Cyclic irrigation.
  - Several options of manual overriding.

• Misting programs:

- Up to 40 foggers with a fogging program each containing:
  - Time of operation.
  - Time of cycle that can be altered by the conditions of temperature, humidity and other conditions.
  - The use of logical conditions for operation.
  - Sequential operation.
- Drainage Sampling: Up to 20 sampling points can be connected to the controller via a device called "Dagan". It measures the quantity, EC and pH automatically and corrects the next irrigation properties
- Filter Flushing: Up to 10 filters divided between up to 2 stations can be programmed.